

UV-T Cube Logger

- + 3D measuring
- + UV-Intensity mW/cm^2
- + UV-Dose mJ/cm^2
- + temperature measuring $^{\circ}C/^{\circ}F$
- + various UV-ranges available
- + permanent or „triggered“ measuring mode*
- + SD-Card Slot
- + graphic and numerical chart on computer



The *UV-T Cube Logger* is a self-contained, high quality UV measuring instrument. It is designed to measure and display peak UV intensity and UV dosage in the UV curing process.

It is equipped with one UV sensor and one temperature for the measuring of:

Full UV 230 – 410 nm
Temp. 0 – 115 $^{\circ}C$ / 32 – 232 $^{\circ}F$

With this total UV band peak intensity and dose measuring, most of the measuring requirements of UV curing applications can be covered.

Due to its UV sensor and the integrated microprocessor the *UV-T Cube Logger* can measure and display the peak UV-intensity of the total UV spectrum (mW/cm^2).

Additionally, this *UV-T Cube Logger* is calculating the UV-dosage (mJ/cm^2) of the UV energy supplied during the time of exposure of one measuring cycle. The UV-dosage is calculated as the total Integral of UV-dosage over the full UV spectral bands.

Equipped with an extra sensor for measuring temperatures from 0 to 230 $^{\circ}F$ / 0 to 110 $^{\circ}C$.

*This Logger features a selectable „triggered mode“, i.e. the 30 sec recording cycle starts within a 120 second readiness phase not before the incident UV-intensity exceeds 2 mW/cm^2 .

The sensor is on one side of the unit, while the display is on the opposite side. After completion of the measuring cycle the measuring results can be scrolled through on the built in 2 x 16 digit LCD display. A special AUTO-OFF feature that turns off the unit automatically after one minute serves as energy saving and extension of the battery service life.

The *UV-T Cube Logger* is optionally available equipped with an SD-Card Slot and an evaluation software for downloading the data to a computer to show, edit and store a history of the measuring results of the entire measuring cycle as graphic charts (mW/cm^2) and (mJ/cm^2)

The *UV-T Cube Logger* is available in six different measuring ranges:

| | |
|--|-------------------------|
| Item 53.3.1 UV-T Cube Logger, Type 1 Diazo | 350 – 460 nm |
| Item 53.3.2 UV-T Cube Logger, Type 2 UV-A | 315 – 400 nm |
| Item 53.3.3 UV-T Cube Logger, Type 3 UV | 230 – 410 nm (Standard) |
| Item 53.3.4 UV-T Cube Logger, Type 4 UV-B | 280 – 315 nm |
| Item 53.3.5 UV-T Cube Logger, Type 5 UV-C | 230 – 280 nm |
| Item 53.3.6 UV-T Cube Logger, Type 6 UV-V | 395 – 445 nm |

Subject to change without prior notice © 2008-04

UV-DESIGN *** Triebstrasse 3 *** 63636 Brachtal *** GERMANY
Tel.: +49 (0)6053 619824 *** Fax: +49 (0)6053 619820
www.uv-design.de *** mail: info@uv-design.de

UV-T Cube Logger

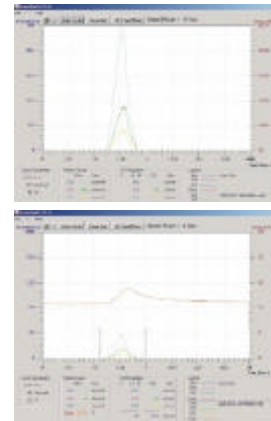
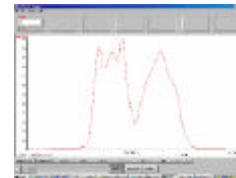
Technical Data:

| | |
|------------------------|--|
| Spectral range: | UV 230 – 410 nm (Standard) |
| Max. Power Input | 0 to 5,000 mW/cm ² |
| Display: | LCD, 2x16 digits |
| Display range: | 0 to 36,000 mJ/cm ² |
| Measuring range: | 0 to 2,000 mW/cm ² |
| Measuring range: | 0 to 115°C / 32 to 232°F |
| Sampling rate: | 0.005 sec (200/sec) |
| Measuring period: | 30 sec. |
| Readiness phase: | 120 sec. |
| Power source: | 7.2 V NiMH Accu-Pack, 70 mA, re-chargeable |
| Power consumption: | 20 µA |
| Battery service life: | 1,000 charging cycles |
| Dimensions: | 2.4" x 2.4" x 2.4" (60 x 60 x 60 mm) |
| Weight: | approx. 17.5 ounce (500 g) |
| Operating temperature: | 0 to 113° F / 0 to 45° C |
| Heat protection: | Heat shield |
| Base Accuracy: | ± 5 % |

In the standard version it is measuring an integral in the spectral range from 230-410 nm, with a peak at the area of 330 nm.



Stores data on SD-Memory Card for the download of data to a Computer



While on the conveyer belt, the *UV-T Cube Logger* can withstand max. 230° F / 110° C for up to 10 seconds. The temperature of the housing should not exceed 113° F / 45° C.

Because of uneven radiation distribution of the UV light source and different type of construction of the measuring devices by different manufacturers, different readings may appear under the same measurement conditions.

Calibration:

In order to keep its full function and precision it is recommended to have re-calibration done once per year. Re-calibration will also be necessary after change of battery. PTB traceable calibration acc. to DIN EN ISO / IEC 17025 with certificate